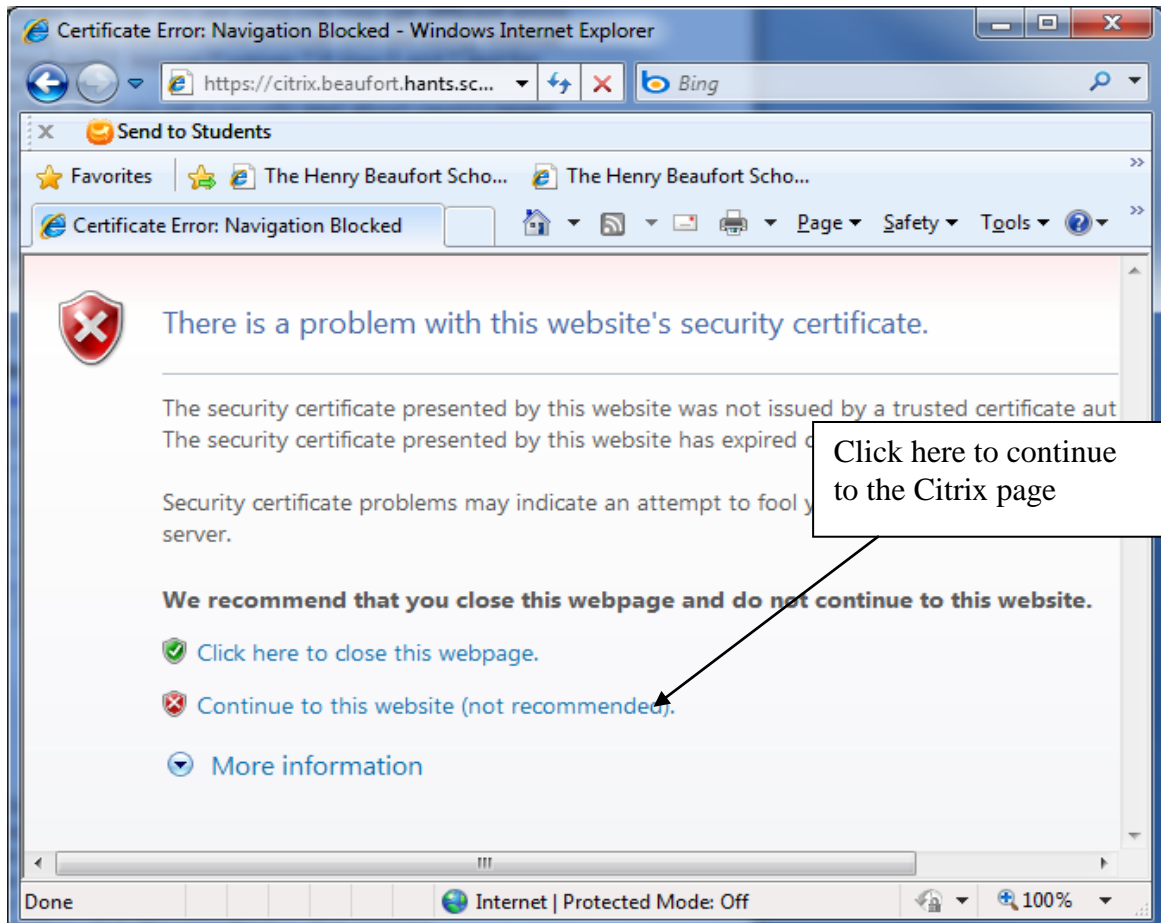
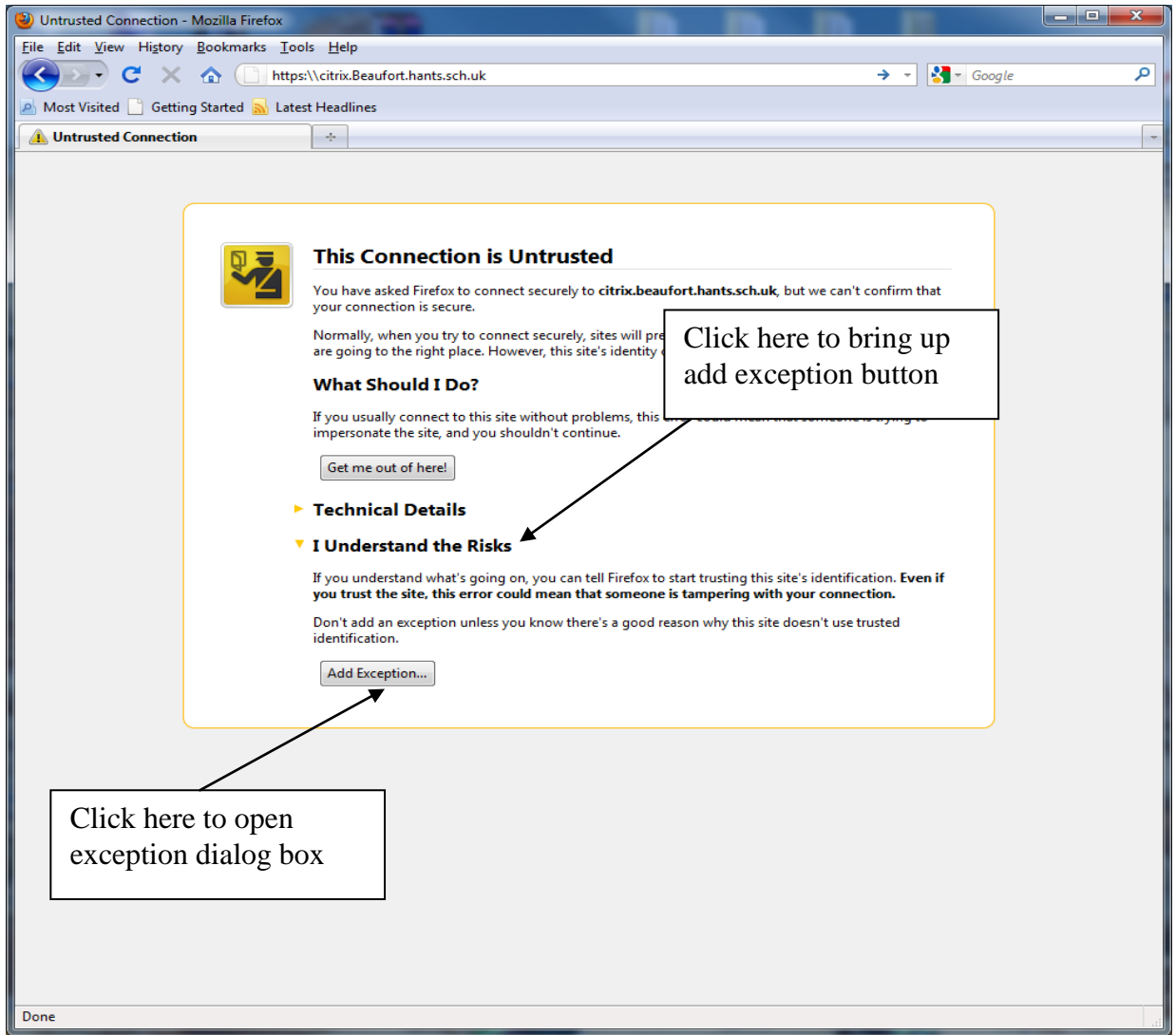


How to Remote Access the School network via Citrix for browsers Explorer 6 to 8 and Firefox

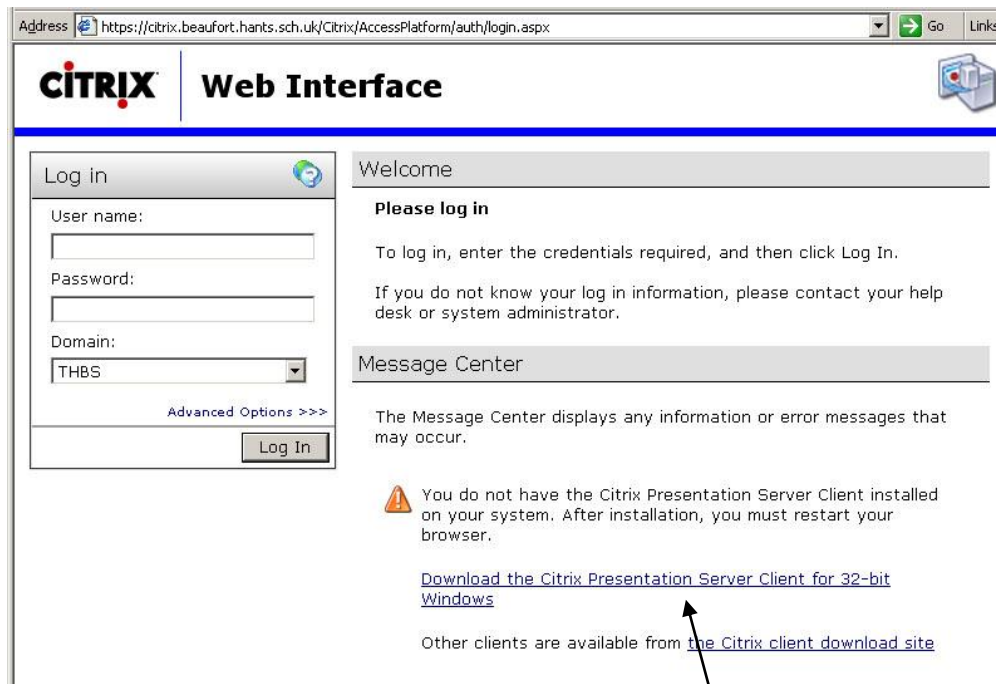
1. Load your internet browser.
2. Type in the address : <https://citrix.Beaufort.hants.sch.uk>
3. Depending on the browser you are using you may get different errors please follow the steps related to the browser you are using. [Internet Explorer 6](#) steps 4 and 5. [Internet Explorer 7- 8](#) follow steps 6 and 7 and for [Firefox](#) follow step 8 - 9
4. **(Explorer 6)** Click ok if you get a security alert about viewing pages over a secure connection
5. **(Explorer 6)** Click yes if you are shown a warning about the sites security certificate then go to step 10.
6. **(Explorer 7- 8)** A new internet explorer window will open with the message “**certificate error: Navigation Blocked**”.
7. **(Explorer 7- 8)** click on the text “**continue to this website (not recommend)**” once you have done this go to step 10.
8. **(Firefox)** A window will appear that says “**Untrusted connection**” first click the “**I understand the risks**” text then some more text will appear under it then click on the “**Add Exception**” button this will then bring up a new dialog box.
9. **(Firefox)** once the dialog box appears click the “**Get Certificate**” button then click the “**Confirm Security Exception**” button then go to step 10.

Internet Explorer 7 and 8

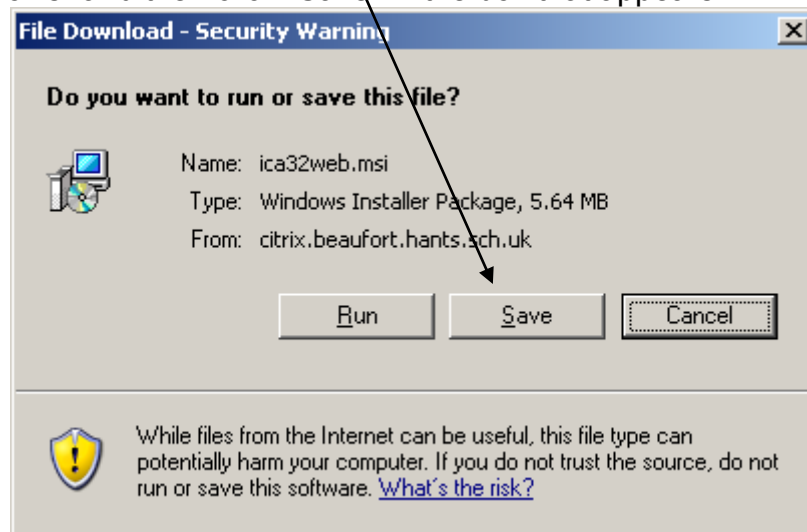




10. You should now see a screen with a login box on the left and some information on the right.



11. If this is the first time you have connected you will need to install the Citrix Presentation Server client. This is indicated in the message centre on the right. If you have logged in before using this computer the message won't appear and you can skip to **Step 13**.
12. Click the link "Download the Citrix Presentation Server Client for 32-bit Windows" and then click "Save" in the box that appears.

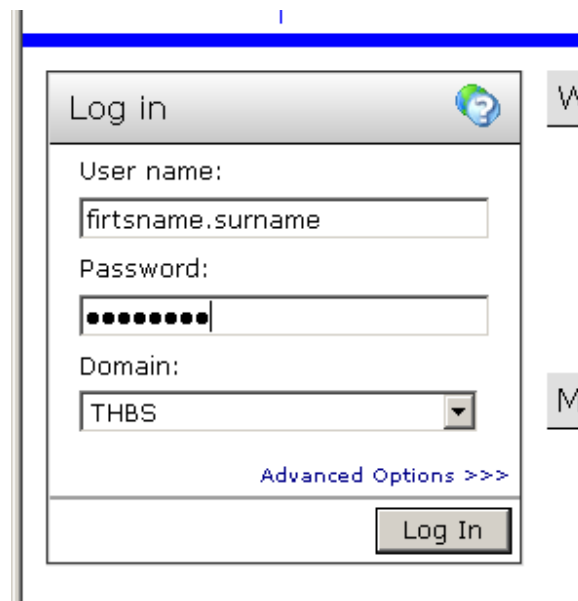


13. Choose a location where you can find the file.
14. **Close** your internet browser and locate the file you just saved.
15. Double click the file.
16. Proceed through the setup stages accepting the licence and leaving other options at default.

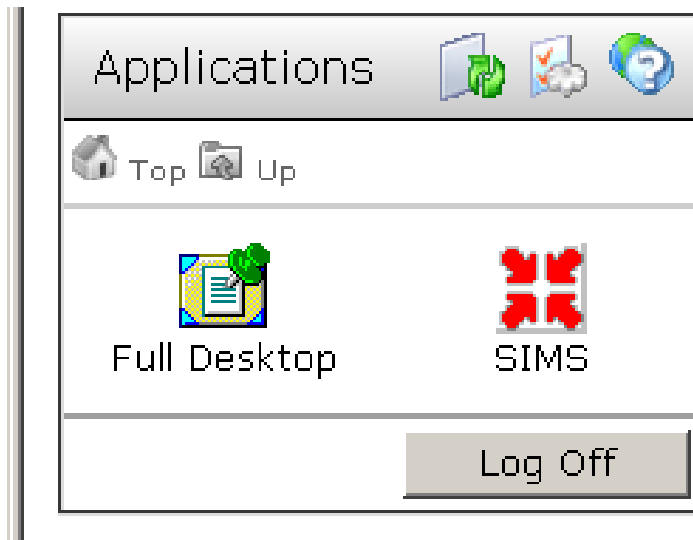


12. Now go back to **Step 1**.

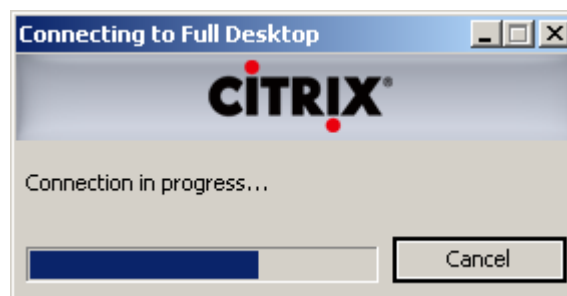
13. You can login to the server using the Log in area on the left. Your normal network username and password work.



14. once you are logged in you will see the left hand area change to look like this:



15. Clicking on the full desktop will load a window with a desktop in school. You will have access to shared areas, home areas and application in school.
16. Clicking on SIMS will launch SIMS.net on your computer.
17. While either option loads the following window displays:



When you have finished with a desktop session please **log off**.
With SIMS you can just close the window.